

Culinary

Ayer's Cliff Farmers' Market

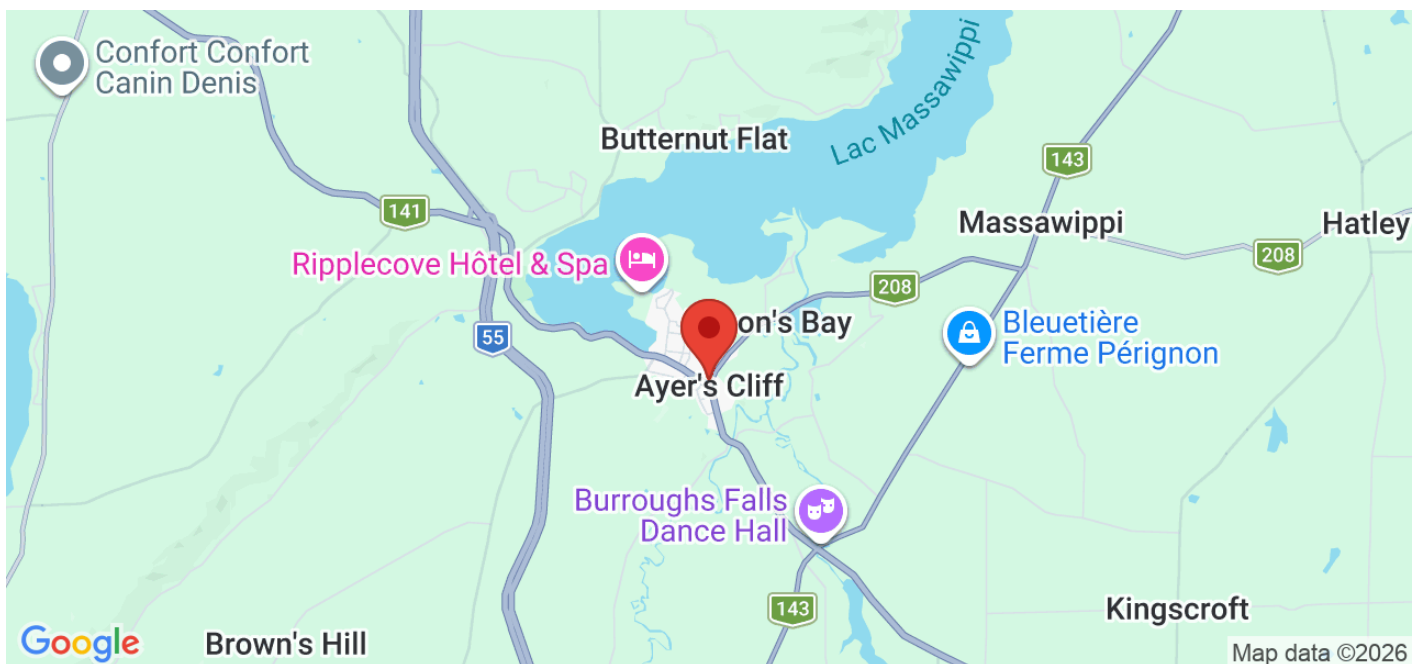
You'll find a wide range of products for sale at the Ayer's Cliff Farmers' Market, including vegetables, berries, meat, fish, eggs, bread, pastries, cheese, coffee, maple syrup and crafts. Open Saturdays from 10:20 a.m. to 12:30 p.m., between mid-May and mid-October. Visitors can also enjoy performances by various musical groups.

Duration
30 min

Dogs
Dogs allowed

Address

161 Tyler Street, Ayer's Cliff

**Gourmet types**

- Local products

Contact

- 819 849-9411
- wmmgtony@gmail.com
- [Website](#)